



# PERFORMANCE BULLETIN

Product     Application     Service     General    news from



March 19, 2003

## 9100 Updates Compared To The 9000

### Screw

The 14202 screw that holds the connecting yoke assembly for the 9000 2<sup>nd</sup> tank adapter has been shortened and changed to 14202-01. If you do not use the new 14202-01 screw in a 9100, the screw will not tighten the 13255 clip. Performance Bulletin # 387 will also explain the change.

Old



14202  
8-32 x 3/8"

New

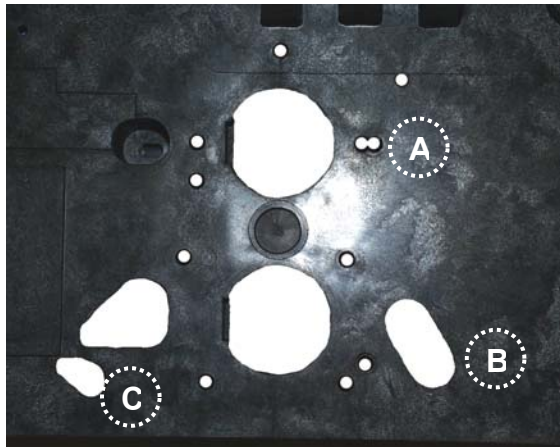


14202-01  
8-32 x 5/16"

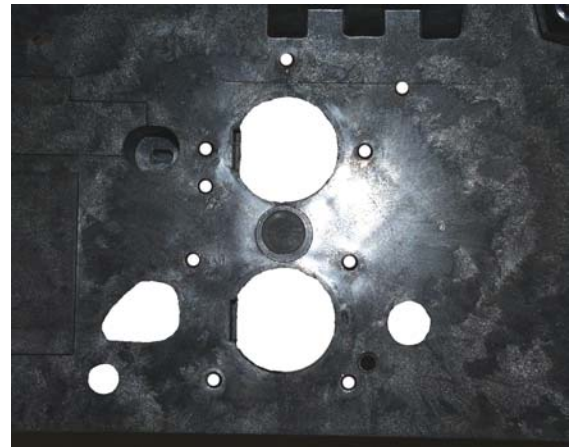
### Backplate

The 9000 backplate has been changed to accommodate the screw location for connecting to the valve body, 2<sup>nd</sup> tank and meter connection for the 9100. If you have an older backplate (powerhead) in stock for a 9000, this will not work on a 9100. The backplate change was in production in late October of 2002.

New 9000/9100 Backplate



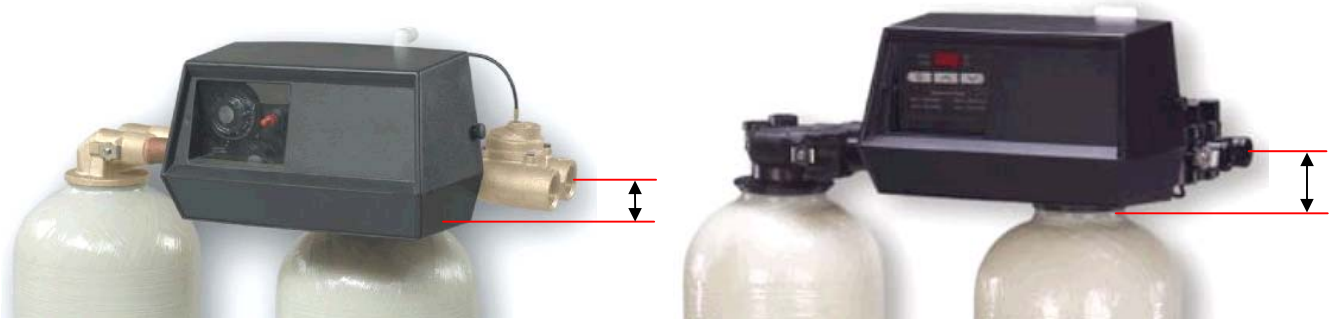
Old 9000 Backplate



- A. Extra screw hole for connecting to 9100-valve body.
- B. Larger opening for locating screw for 2<sup>nd</sup> tank connection.
- C. Larger opening for meter screw.

## Inlet/Outlet

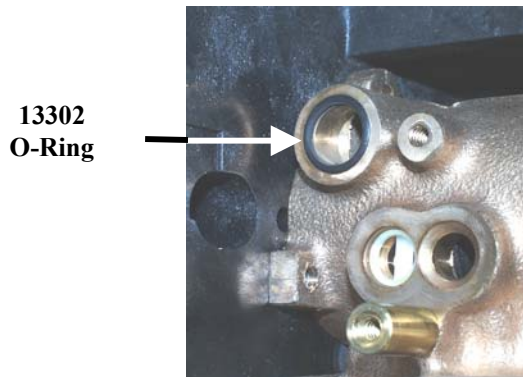
The 9100 control valve inlet/outlet will be about 3/4" higher above the tank than a 9000 control valve. If you were to convert an existing 9000 to a 9100, plumbing changes may be required.



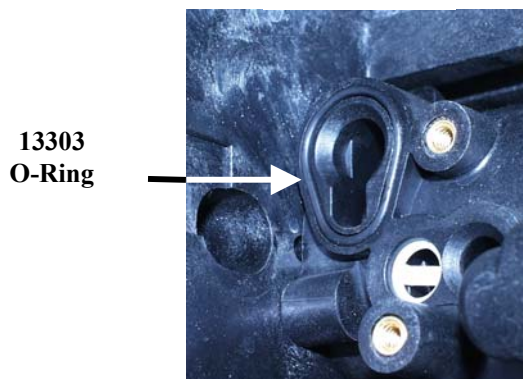
## Injector Drain O-ring

The 9100 injector drain o-ring is larger than the o-ring on the 9000 control valve. When ordering the 60385-XXXX injector assembly, both drain o-rings will be included with the assembly.

9000 Drain



9100 Drain



60385-XXXX  
With Both Drain O-Rings



As always, thank you for using Fleck controls.

Sincerely,  
Pentair Water Treatment, Inc.

Jay Runkle  
Technical/Sales Support